

What is the Greater Hartford Mobility Study?

The GHMS is a comprehensive study aimed at addressing mobility challenges in the Greater Hartford Region. It will ultimately recommend transportation solutions to facilitate economic growth on both sides of the Connecticut River while improving public safety and expanding mobility choices to all users.

Connecting with the Community

In early 2022, the study team shared potential concepts on the GHMS website. These concepts were shaped with input from the public and stakeholders. Live Online Public Discussion sessions were held to present the concepts and encourage feedback on potential transportation improvements. The study team also worked with diverse key community influencers to host neighborhood discussion groups.

Transportation concepts range from extending bus and rail service, providing dedicated bicycle lanes on streets, roadway safety improvements, and addressing congestion on highways. Public input has been instrumental in guiding the study's recommendations about how mobility needs can be addressed, and transportation services enhanced across the region.

Below are some of the places we've been and some of the things we've heard.



Latino Fest

"Please prioritize bike infrastructure that caters to all trips regardless of purpose instead of recreation-only."



National Night Out

"Climate preparedness is crucial! I support targeted reinforcement that improves resilience and longevity."



Hartford Taste Festival

"I like the vision of increasing rail service to include stops between Hartford and Springfield, especially with access to the airport. I would also like to see more focus on the rail lines being a transportation mode for big businesses, once we get back to fully working in person."

"I favor BRT improvements and small roundabouts for traffic calming, not widening of existing roads."



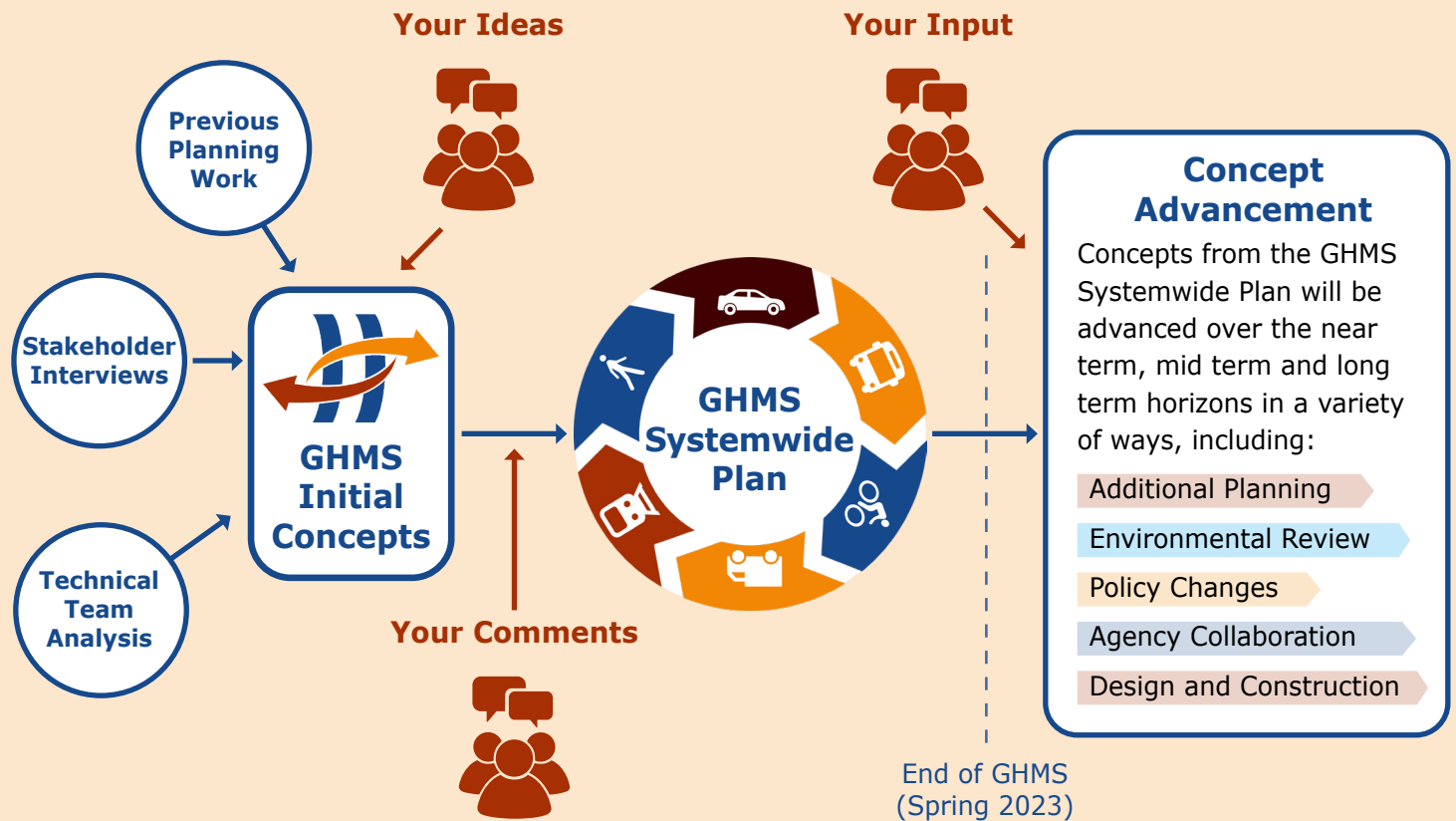
Semilla Cafe Multi-Modal Meetup



National Night Out

Your Input Matters... Every Step of the Way!

The GHMS has incorporated public input into every step of the process, from generating ideas for the initial concepts to choosing concepts to advance to the Systemwide Plan. As concepts from the Systemwide Plan further advance toward implementation, public input will continue to be critical.



Stay Involved!

The GHMS will be actively informed by the public and stakeholders. This is critical because many in Hartford and beyond depend on multiple modes of transportation to get around. We want to hear your comments, questions, and concerns!



Visit our website frequently for new information about the planning process, regional mobility needs, engagement opportunities, accomplishments, and decisions.

hartfordmobility.com



Send us a comment or sign up for our mailing list to stay-up to date on the GHMS!

hartfordmobility.com/contact



To contact us by phone, please call:
1 (860) 308-1435



Follow us on social media!

